

designer ROBERTO LAZZERONI

CDF - Coup De Foudre

year: 2017

A precious, important, customizable collection,
made of voluptuous cornucopias illuminated
by a dimmable led light.



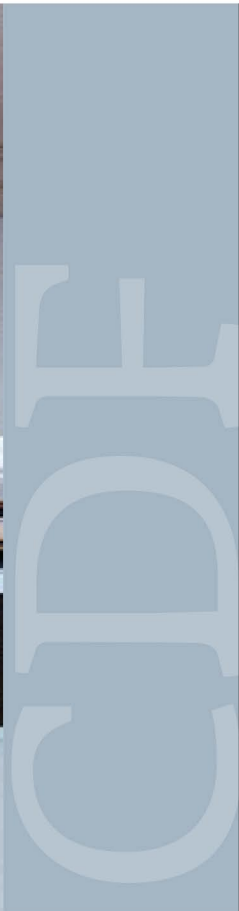
▲ Item **CDF01** (composition of 4 pieces)
Led chandelier
Finish: Satin gold
Accessories: Satin white glass

◀ Item **CDF05**
Led chandelier



◀ Item **CDF04**
Led chandelier
Finish: Satin gold
Accessories: Clear glass

Softness
and **strength.**
Sensuality and
character



▲ Item **CDF05**
Led chandelier
Finish: Polished nickel
Accessories: Clear glass

Love
at **first**
sight

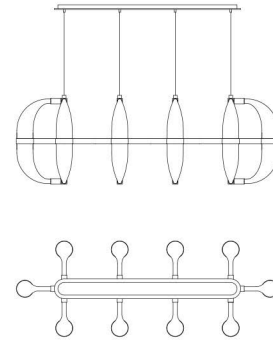
Love at first sight between glass and metal.
A light cascade suited for a vertical or horizontal
development, according to the needs.
One, two or many elements. The imperfect,
organic and sinuous lines of the hand blown
glass are contrasted by a metallic modular
structure.
Softness and strength. Sensuality and character.



▲ Item **CDF04**
Led chandelier
Finish: Satin gold
Accessories: Satin white glass

collection

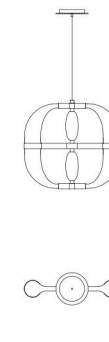
Item **CDF05**
L.148 x D.53 cm
H.69 cm min - 204 cm max



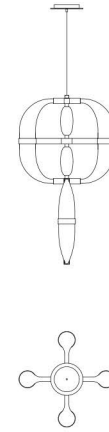
Item **CDF01**
L.53 x D.53 cm
H.69 cm min - 204 cm max



Item **CDF02**
L.53 x D.20 cm
H.69 cm min - 204 cm max



Item **CDF03**
L.53 x D.53 cm
H.115 cm min - 250 cm max



Item **CDF04**
L.53 x D.53 cm
H.207 cm min - 342 cm max



▲ Item **CDF01**
Led chandelier
Finish: Gunmetal
Accessories: Satin white glass



▲ Item **CDF01**
Led chandelier
Finish: Gold plated
Accessories: Amber glass



▲ Item **CDF01**
Led chandelier
Finish: Polished nickel
Accessories: Clear glass



▲ Item **CDF02**
Led chandelier
Finish: Polished nickel
Accessories: Satin amber glass

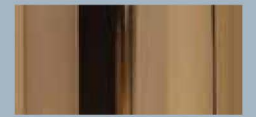
metal finishes



polished nickel



gunmetal



gold plated



satin gold

blown glass colour



satin white

clear



satin amber

amber